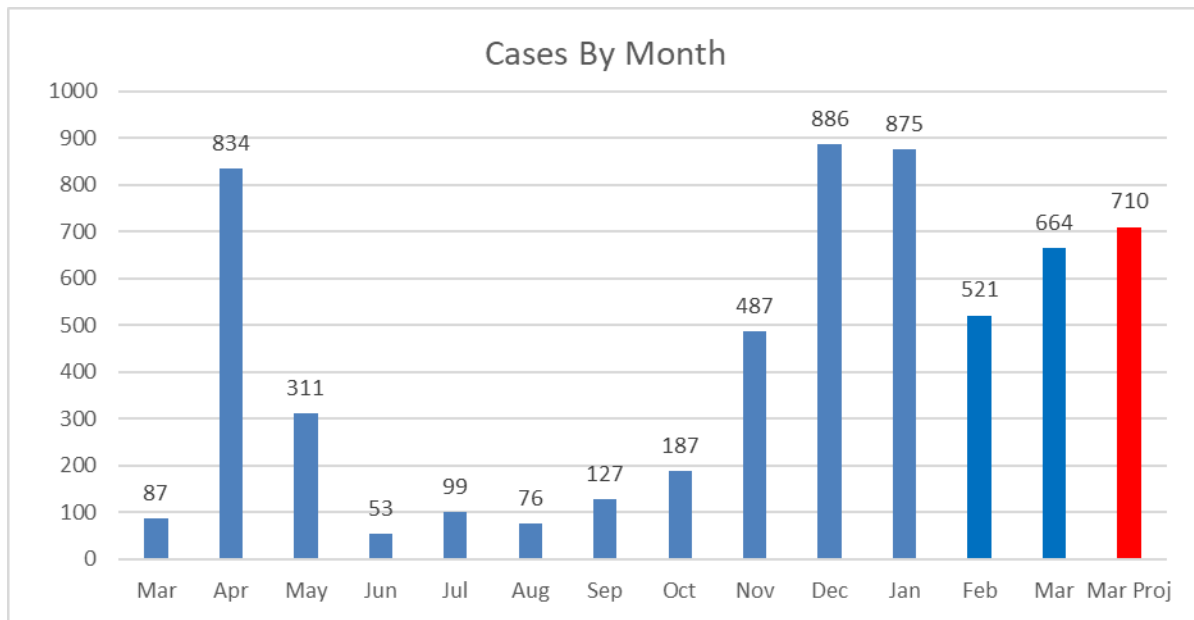


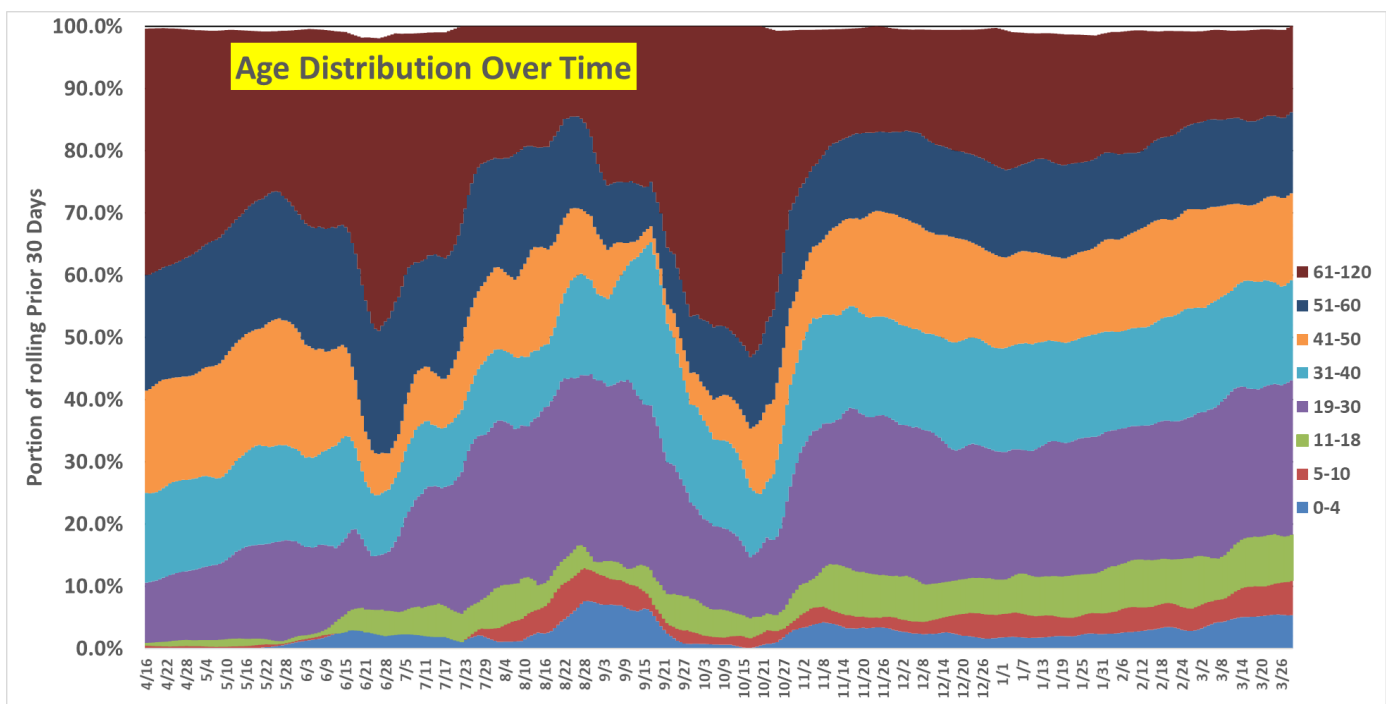
Uptick in cases

There has been a recent increase in the number of cases. March will be the 4th worst month for number of cases since the start of the pandemic.



Even though deaths are down the danger of this is the more people infected the greater the chance for mutations into variants. At the Franklin level the numbers are small but on a national level the chances are significant.

There has been speculation on my FB page as to why case numbers are increasing. I don't know the answer of course but here is some insight. Below is a plot of cases broken down by ages over time. It looks back 30 days. I choose that because, I'm told, that is how long the health department follows an infected person.

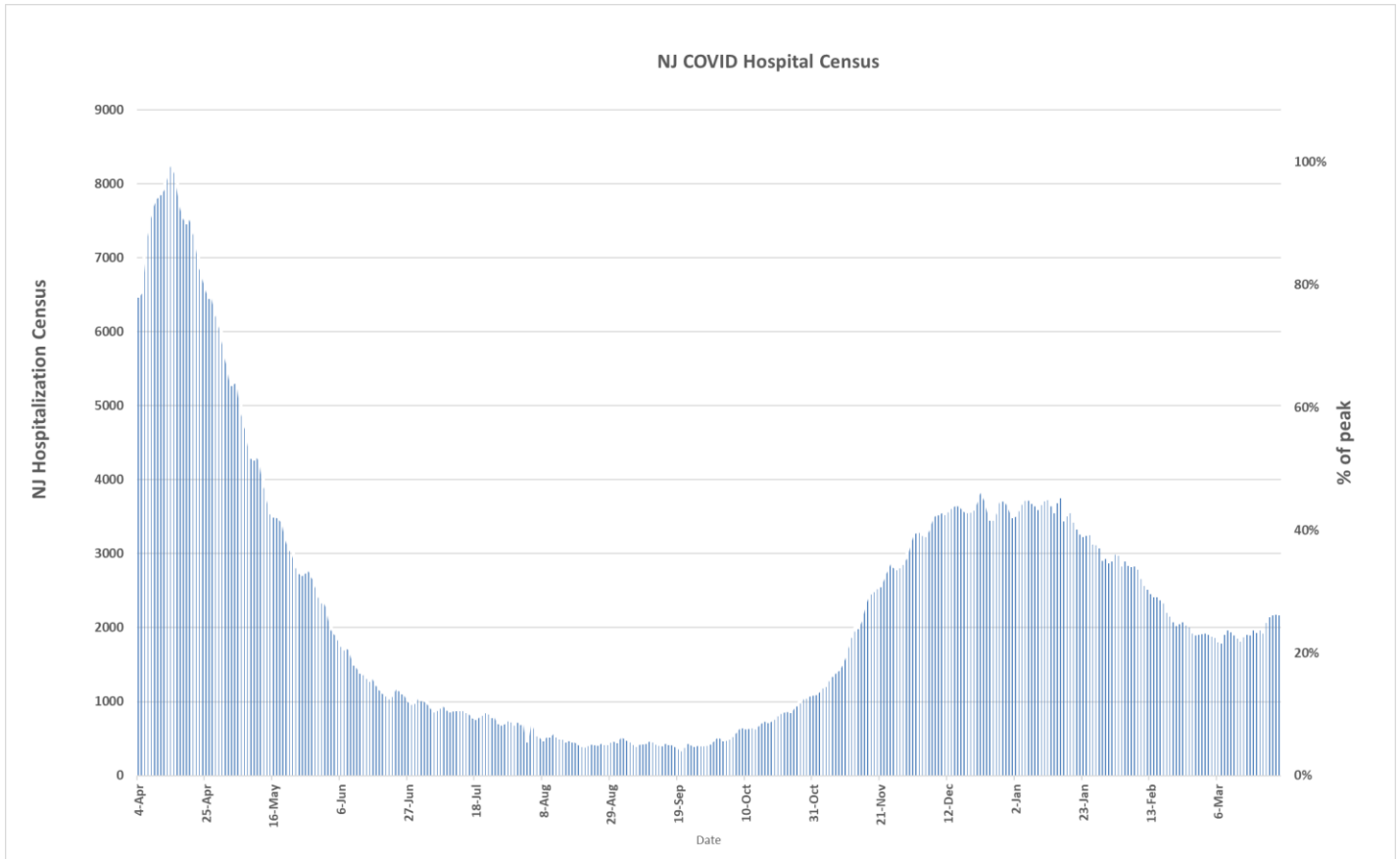


You can see there is a growth in the lower ages.

It's easier to understand if one compares 2 days. I'll arbitrarily pick Christmas day to compare to today.

Age->	0-4	5-10	11-18	19-30	31-40	41-50	51-60	61-120
Xmas	2.3%	3.2%	6.4%	21.9%	16.2%	13.8%	14.3%	20.5%
29-Mar	5.4%	5.6%	7.3%	24.8%	16.1%	14.0%	13.0%	13.8%

The top row is age. The next row is the percent on Christmas for each age and the next is for today. There are cases where the age isn't known so it doesn't always add up to 100%. I highlighted the growth which is in the younger ages. This may be part of why there are fewer deaths. Hopefully, the decrease in the death rate will continue. The recent increase in hospitalizations concerns me.



I would not expect to vaccines to make much of a dent yet, but soon hopefully.

As I posted earlier today a good site to look at vaccination rates is <https://data.rgi.com/covid-19-vaccine-tracker/new-jersey/34/>