

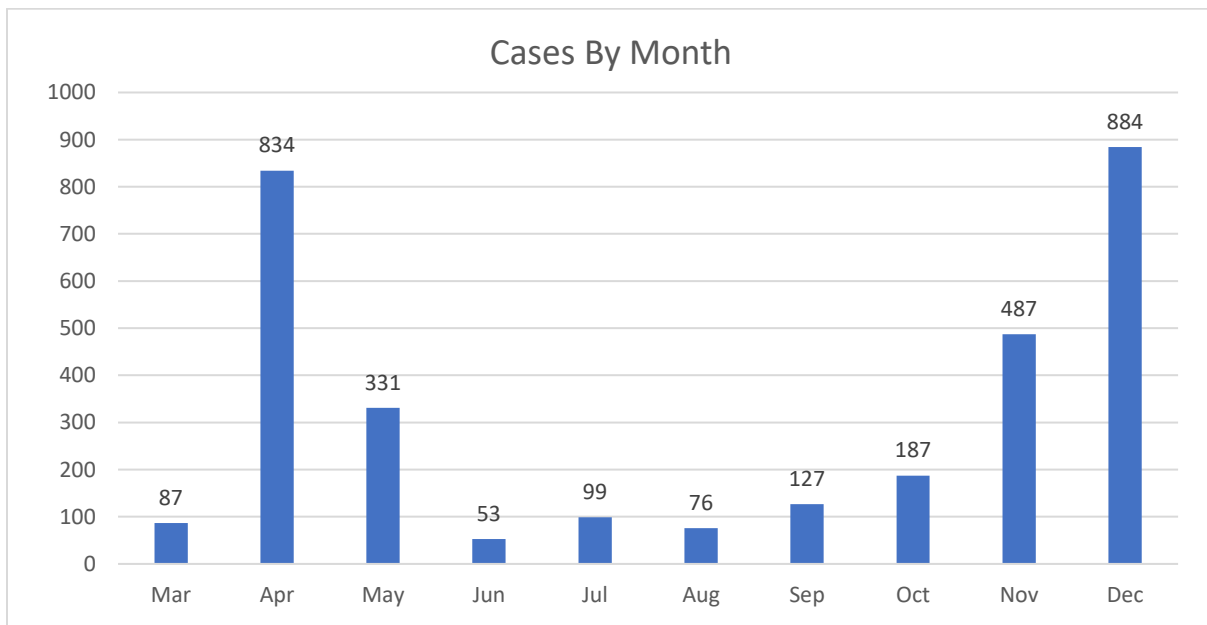
Today's Cases (12/31/2020)

New cases 71
Total cases 3147

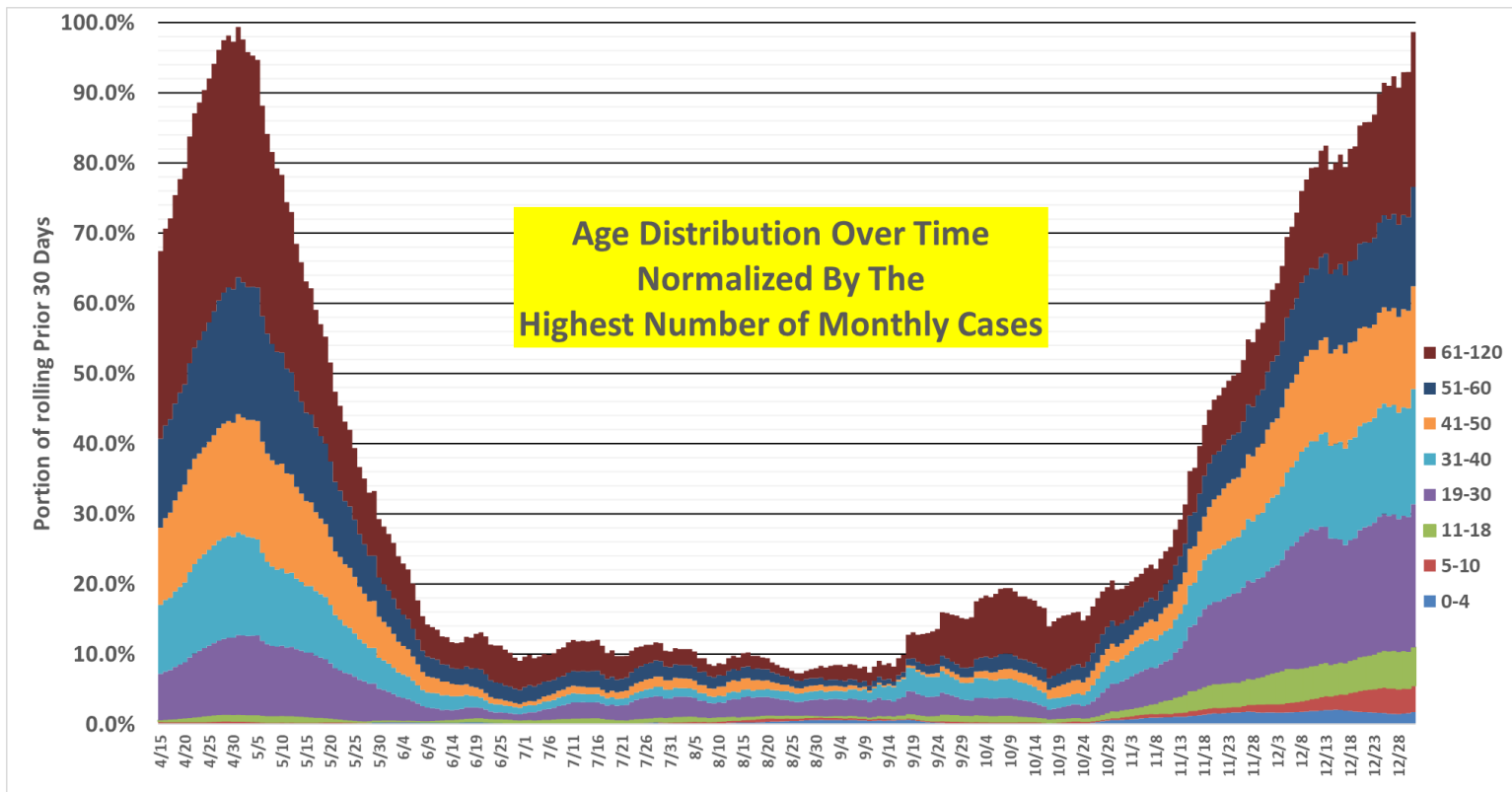
New deaths 0
Total deaths 168

3	4	5	6										
11	14	18	19	19	19	19							
20	21	22	24	25	25	25	25	26	26				
30	31	33	34	34	34	36	36	39					
40	41	42	44	45	45	48	49						
51	51	53	54	55	55	55	56	56	57	59			
60	60	60	61	62	62	63	63	63	63	64	64	65	
	65	68											
71	75												
86	86	87											
90	93												

I regret saying, this is the worst day so far for Franklin, topping April 7th's 64. And December is the worst month so far.

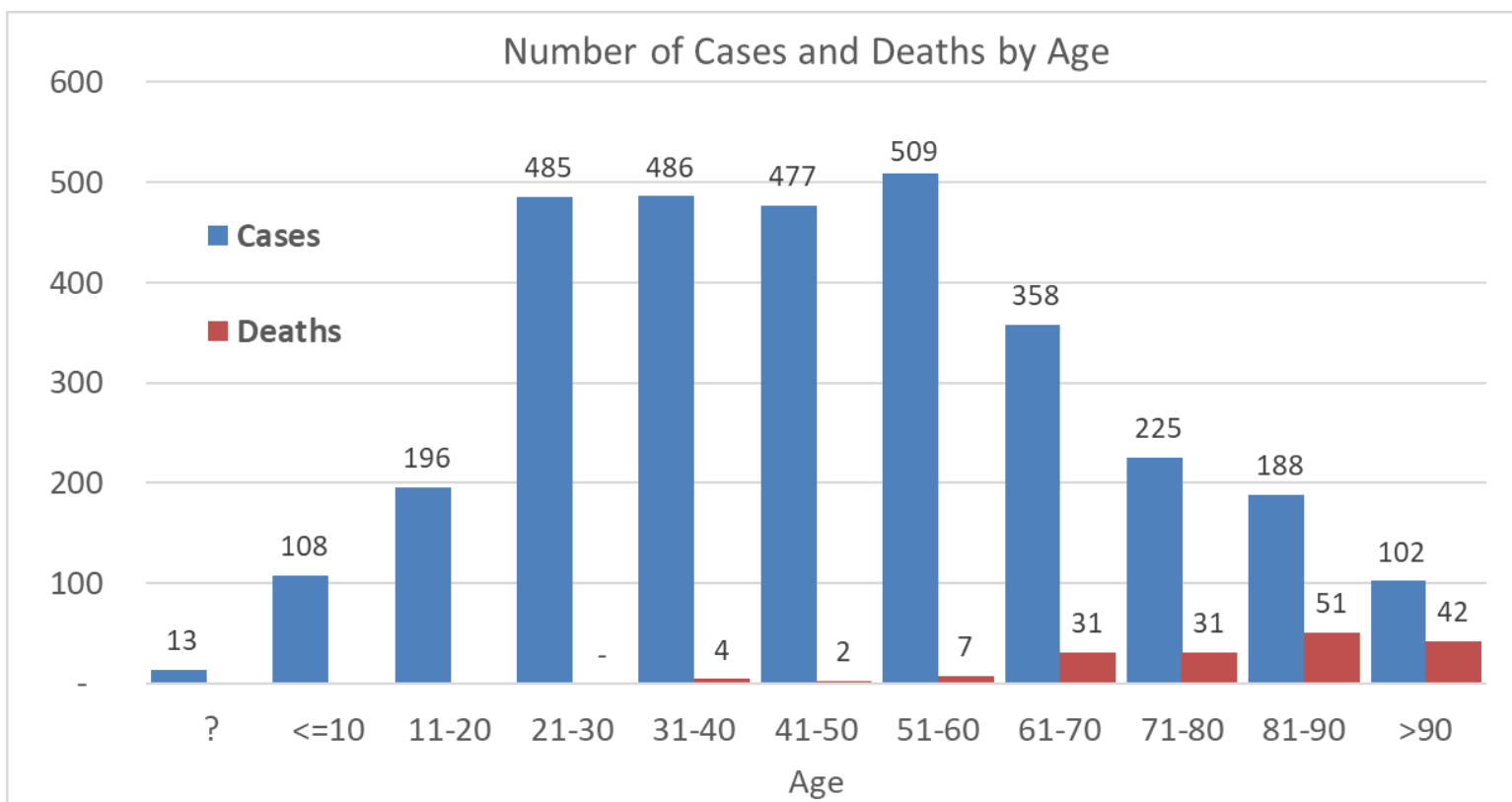


Also we are at 99% of the 30 day case load peak of May 1st

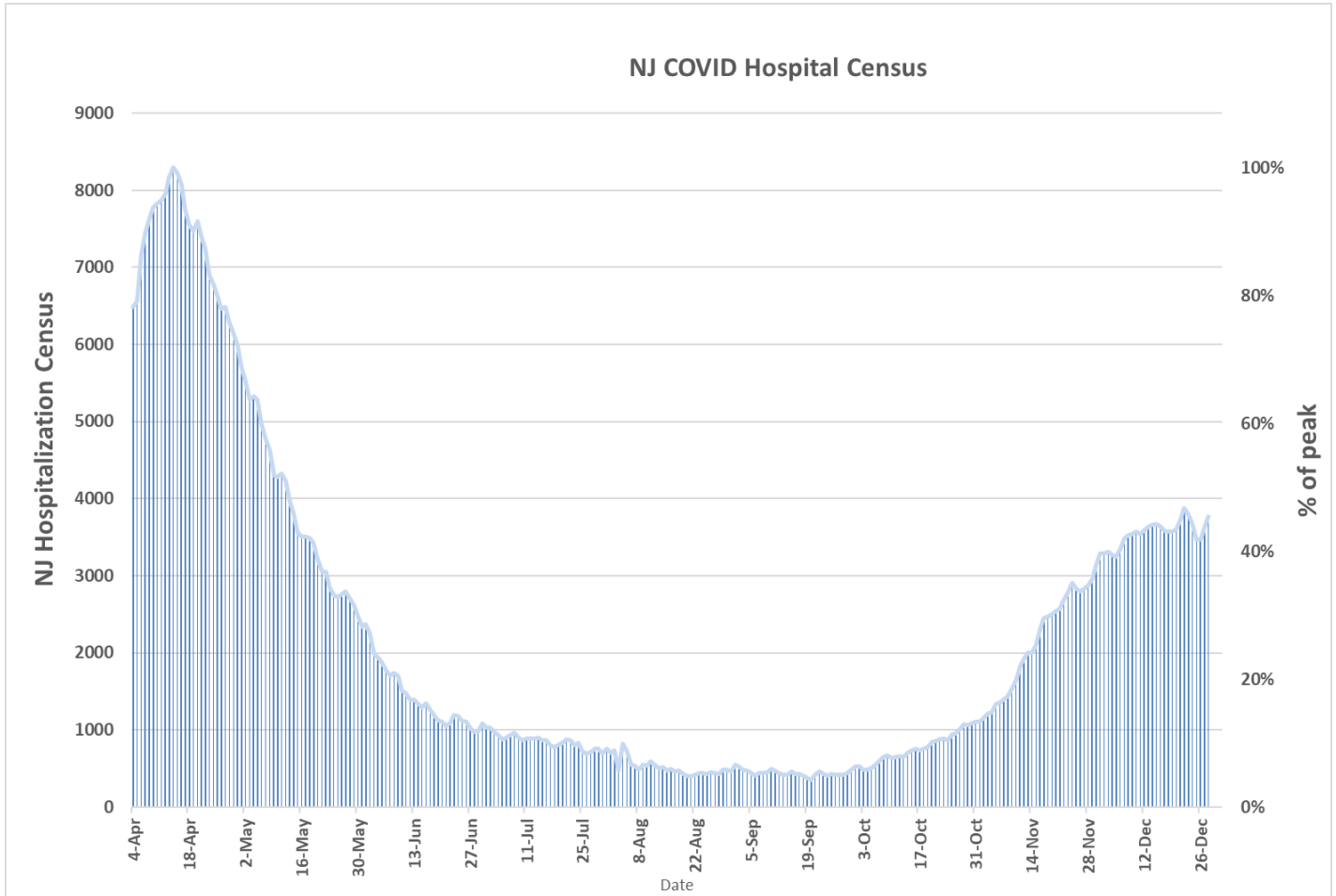


With people over 60 making up 22.3% of the current (30 day) cases.

Cumulatively since March, by age, we look like this.



The good news is hospitalizations are TRYING to peak in the mid-40s% of the spring peak in early April.



Please don't party with others in person tonight. Zoom is free and if you Zoom from home you don't need a designated driver.

2021 will start hard and end easy. We still have a lot of work ahead. The vaccine is here. Live to receive it.