

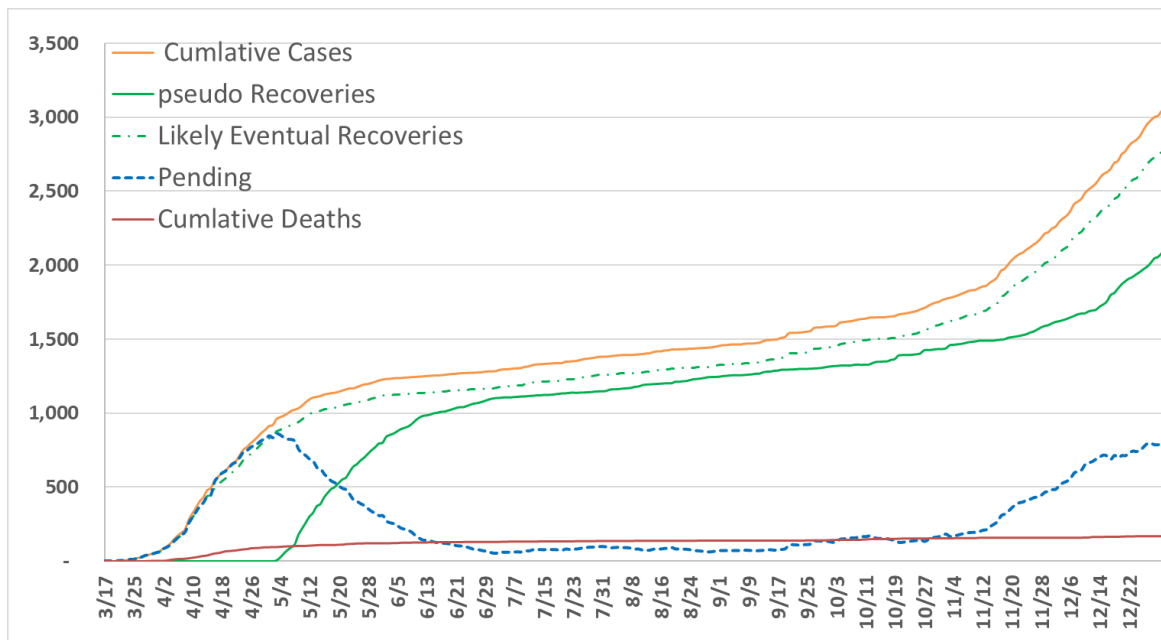
Today's Cases (12/29/20)

New cases 31  
Total cases 3043

New deaths 0  
Total deaths 168

14							
24	25	25	27	28	29		
31	33	34	37	37	38	38	39
44	45	48	49				
51	53	53					
61	66						
70	75	76	77				
88							
92	93						

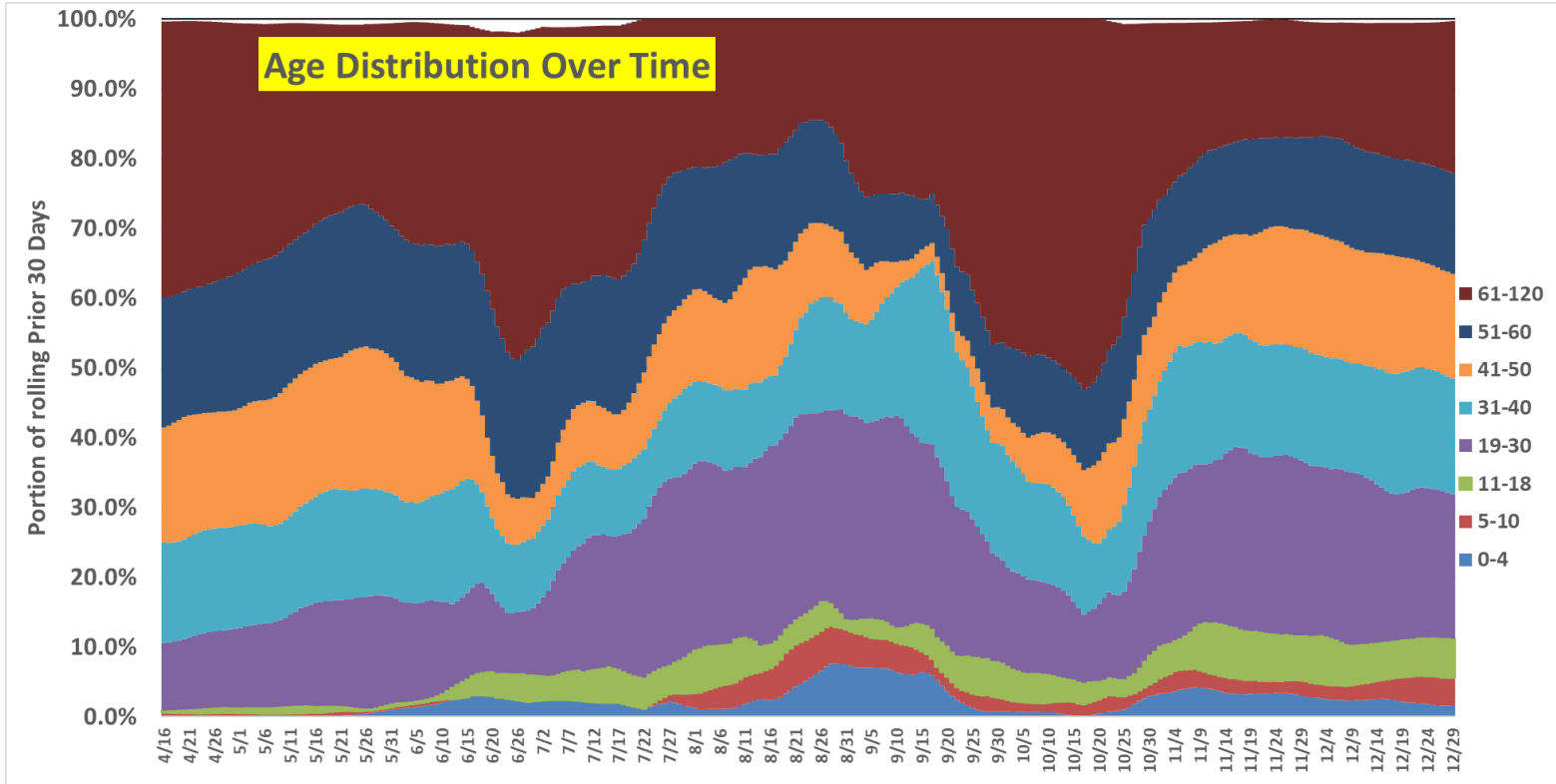
For those who missed it yesterday I posted that the county hadn't been reporting deaths to us lately. That is why we were getting no deaths. Yesterday I listed 10 death all occurring between Dec 8<sup>th</sup> and 22<sup>nd</sup>. I indicated I feared there were more in November. I'm happy to say those 10 deaths were all of the deaths from Nov 11 – Dec 28.



The graph above shows:

- Cumulative cases,
- Pseudo recovered: The number of people who were infected 30 or more days ago who haven't died.
- Likely Eventual Recoveries = cases \* (1-death rate)
- Pending recovered: the number of people infected in the last 29 days who haven't died. (total cases – deaths – pseudo recovered)
- Cumulative Deaths

Below is a graph which shows the age distribution of “active cases”. For “active cases” I use the health department’s definition as anyone who tested positive and hasn’t died in the last 30 days. That is how long they follow people, or so I was told in June.



What I see is the over 60 numbers are rising in proportion to the 20 year olds.

Please wear a mask and observe social distancing. We can do this.