

New people affected 7/5/2020

Each one is a person not a number

New cases in Franklin Township: 3 - Ages 18, 50, 69

Total cases in Franklin Township: 1302

New fatalities reported in Franklin Township: 0

Total fatalities reported in Franklin Township: 129

LTC fatalities reported in Franklin Township: 62 (last updated 6/27)

Franklin calculated values *

- Doubling time: = 1 year
- R_7 : 1.6
- pseudo Recovered: 1112
- Pending Recovery: 61
- 84% of deaths (109 of 129) are 65 years or older.
- 55 consecutive days with 10 or fewer new cases
- 4 consecutive days with 3 or fewer new cases

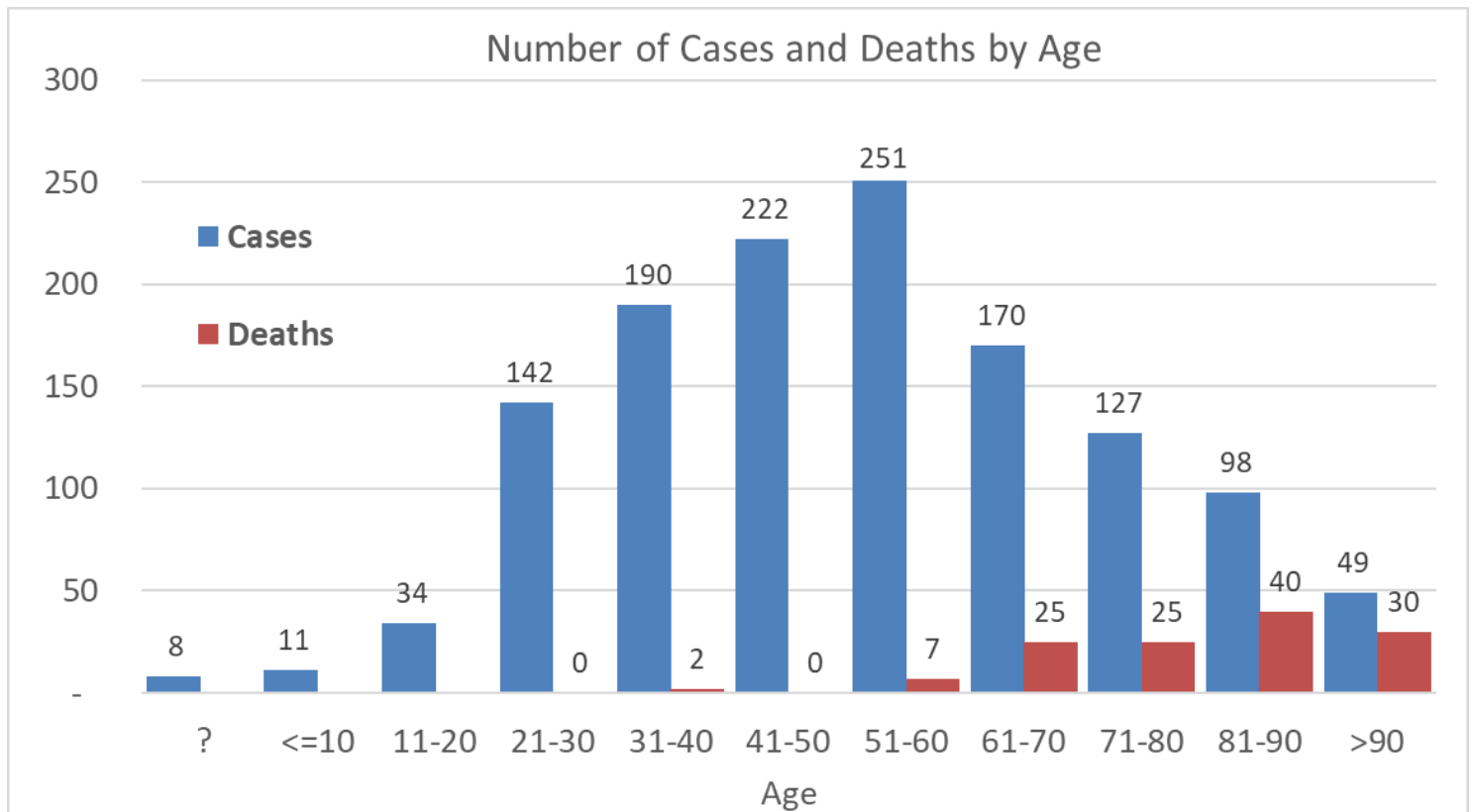
NJ Hospitalizations % of peak (917/8293) = 11%

NJ total tests 1,485,501

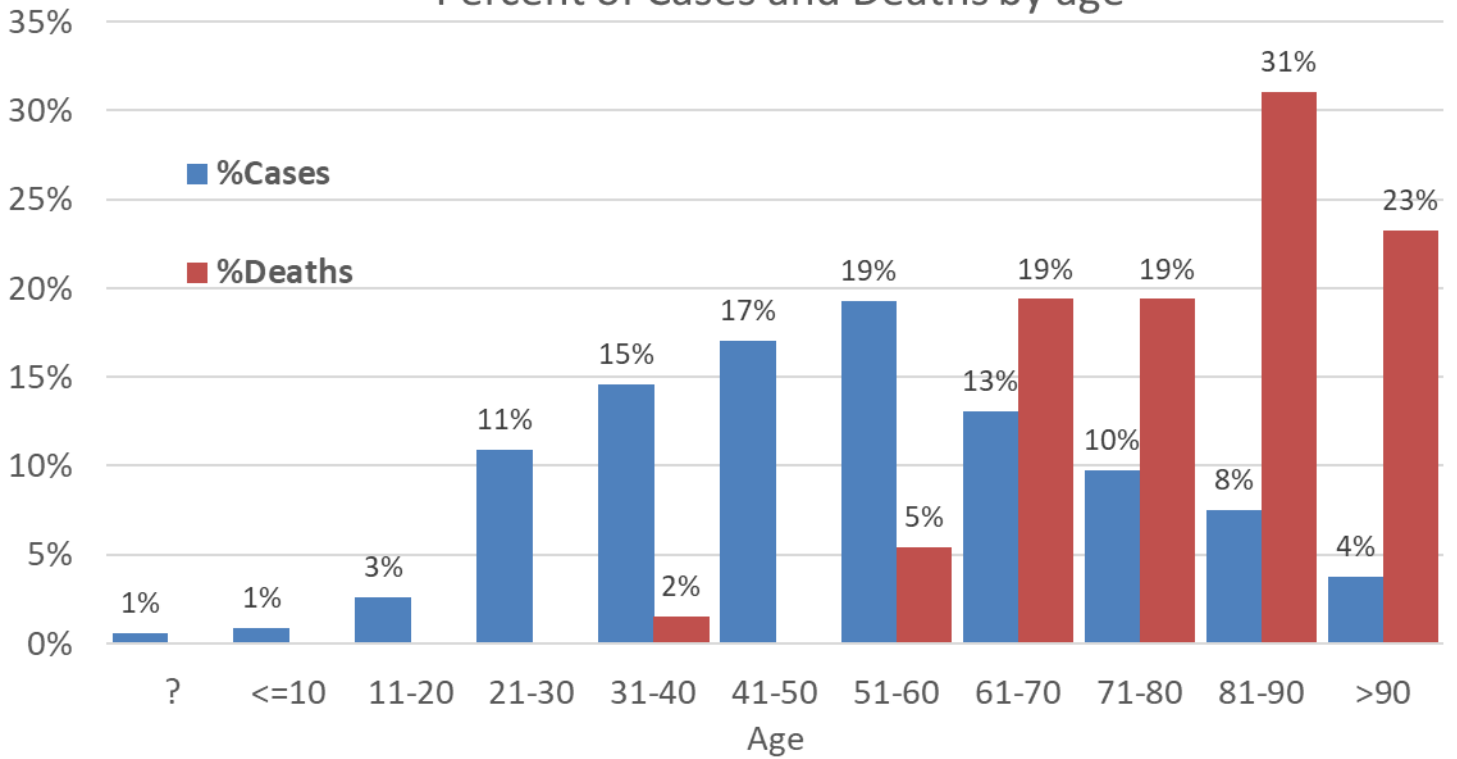
NJ total positive = 1,508,548 - % positive 12%

NJ spot positive = 1.5% **

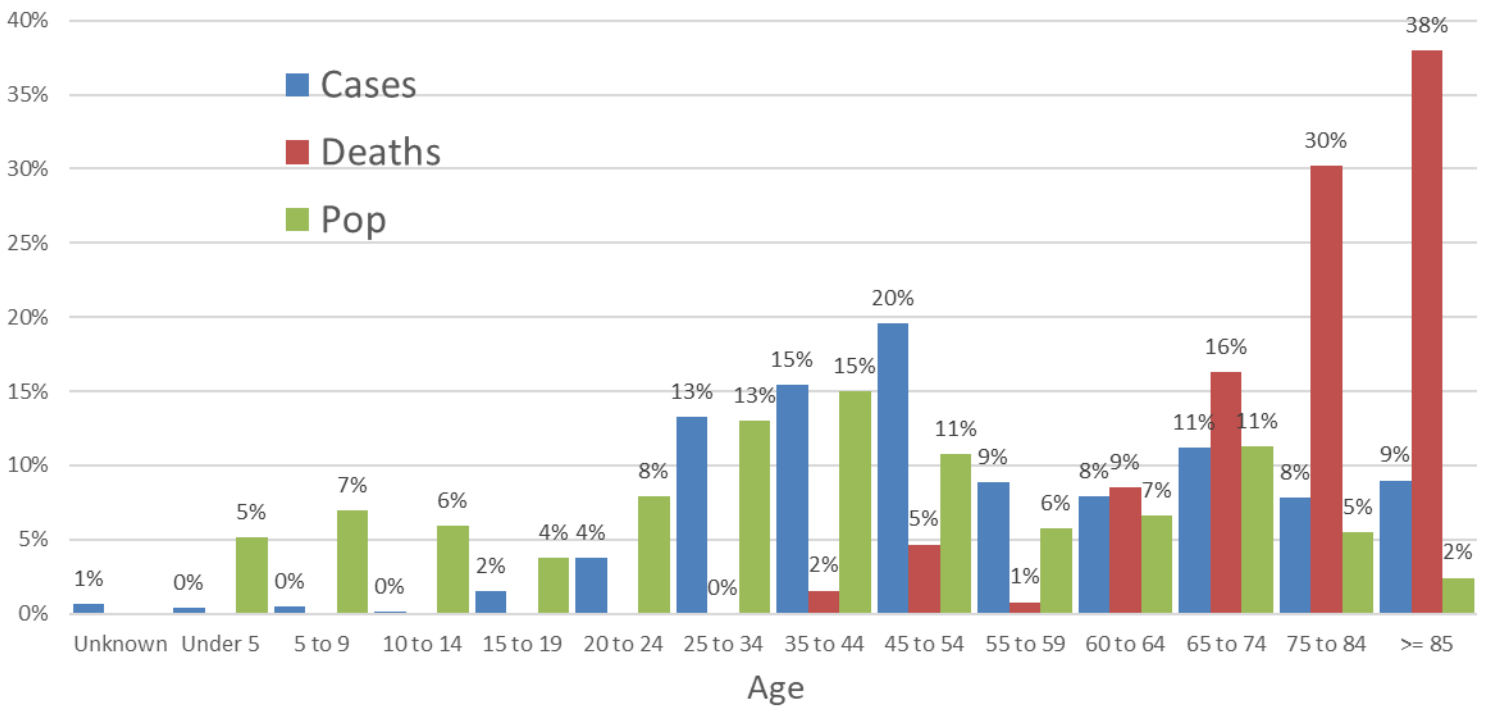
NJ average number of tests/day in the last 10 days – 20,890



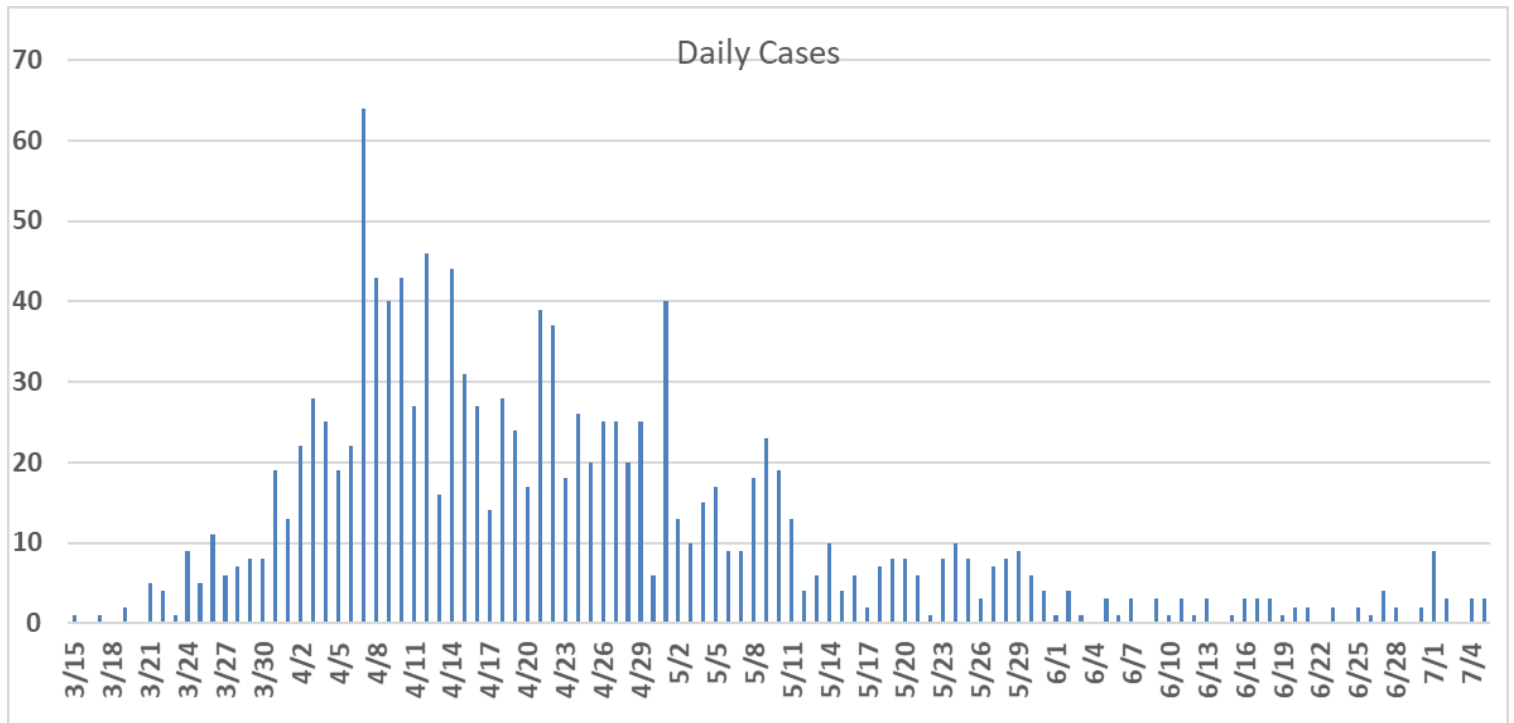
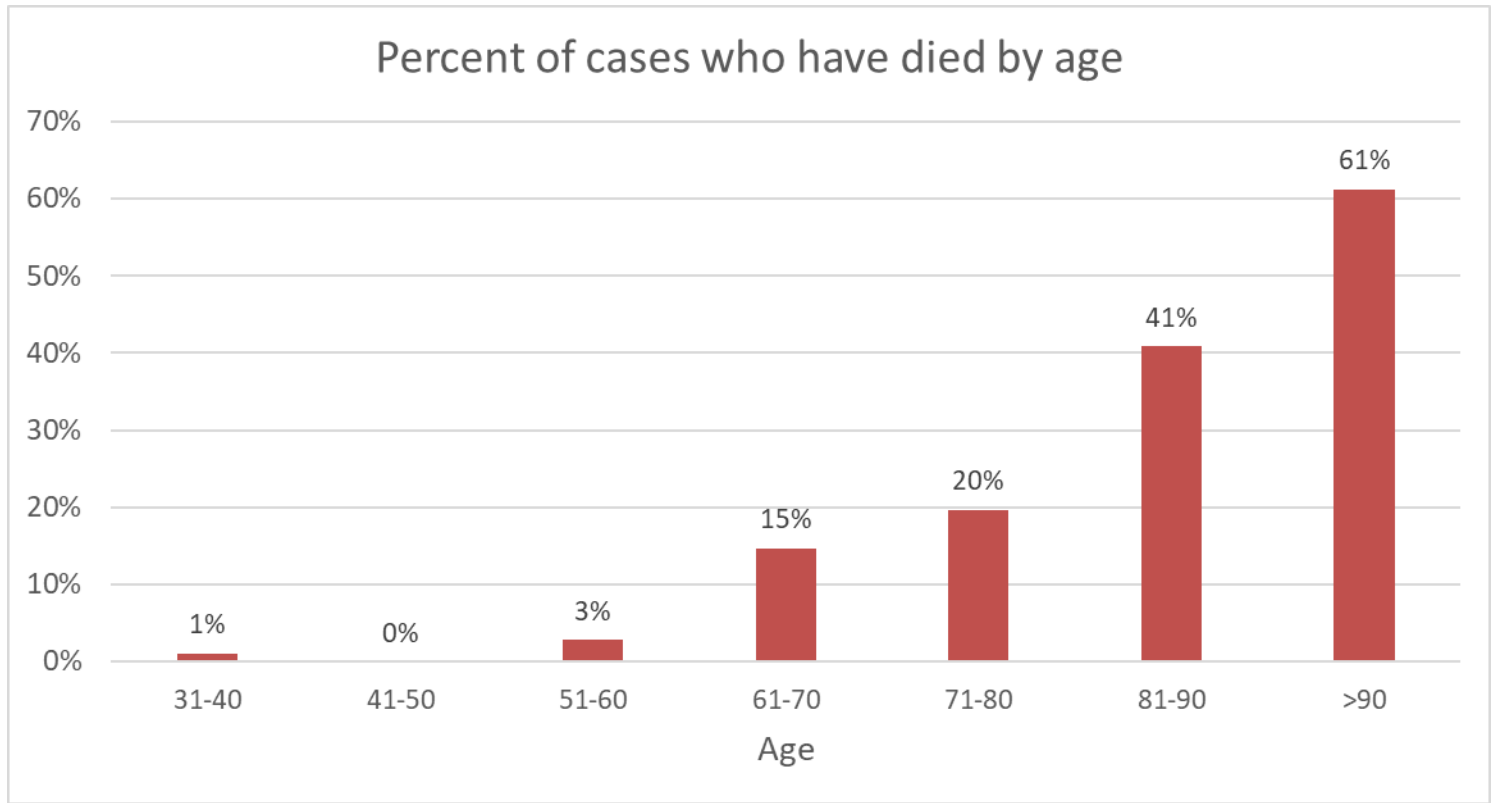
Percent of Cases and Deaths by age



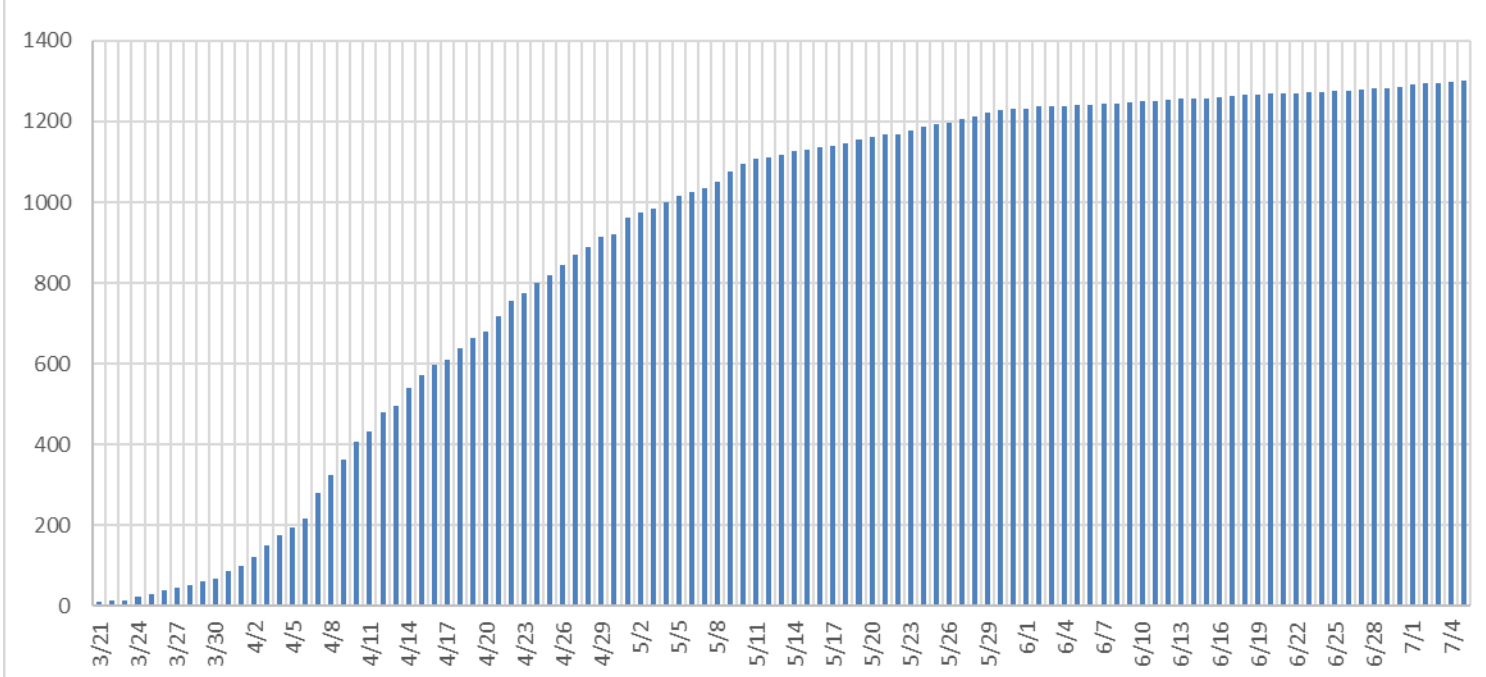
Percent Cases, Deaths and Population by Age



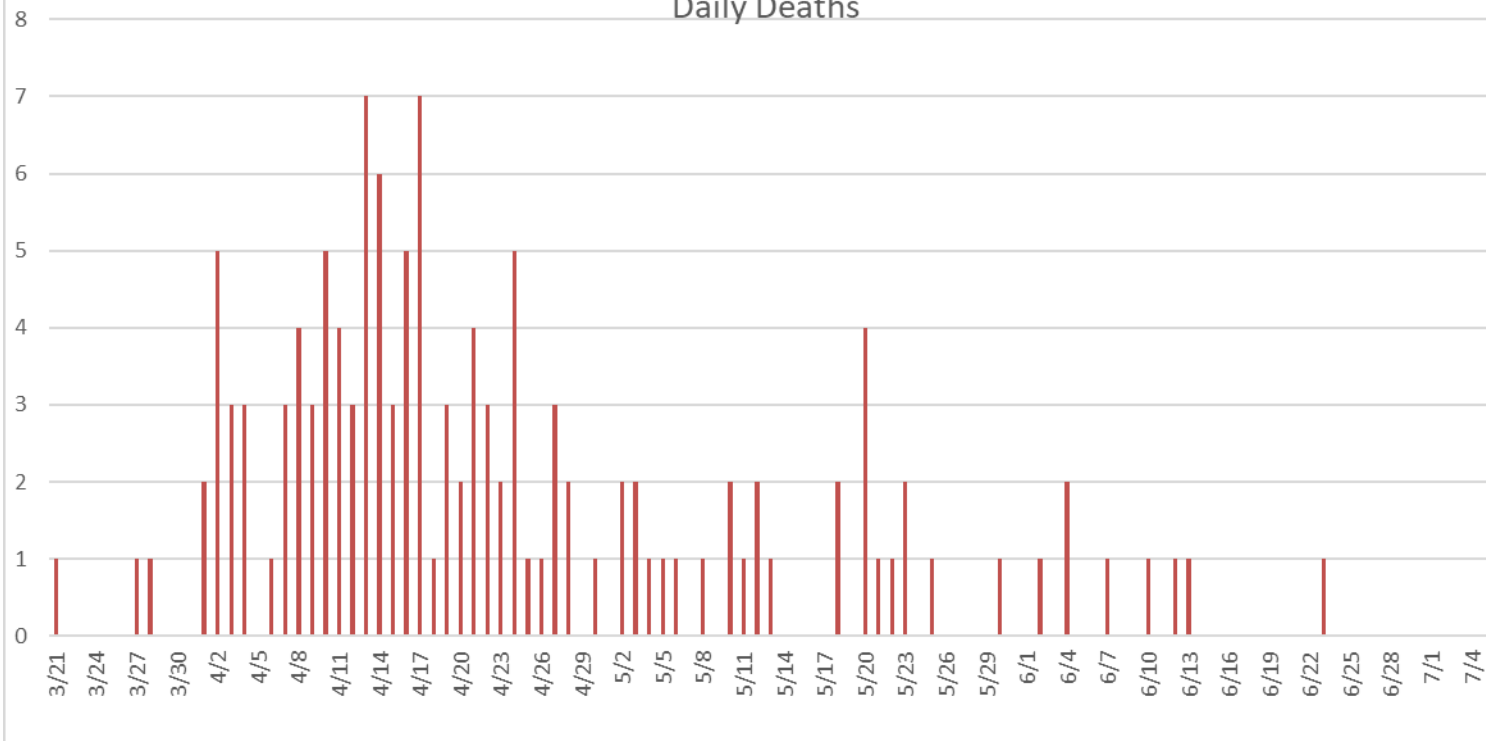
What percentage of COVID positive cases in each age group have died.



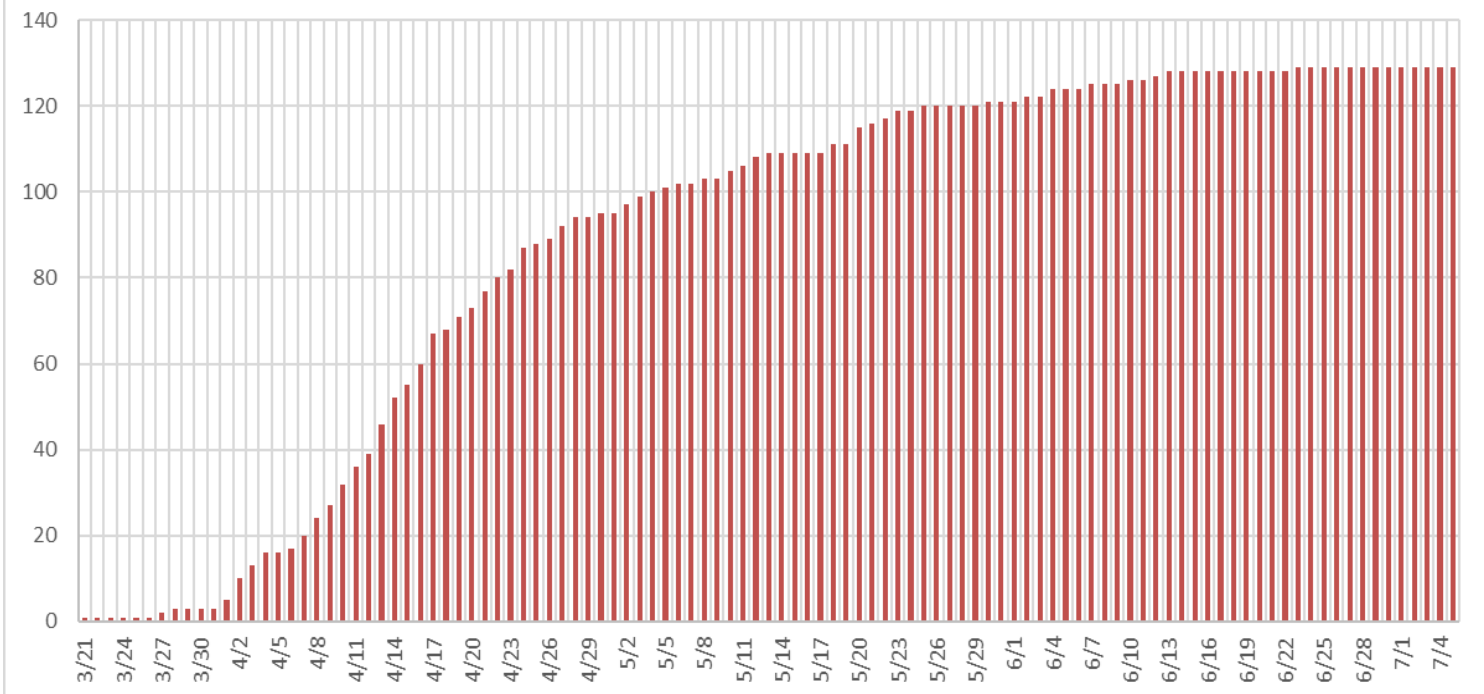
Cumulative Cases



Daily Deaths



Cumulative Deaths



* Definitions

Doubling time: The amount of time it would take to double the number of current cases at the current rate of growth. The higher the better

R_7 : The number of people an infected person would infect. Calculate by the sum of the new cases over the last 7 days divided by the number of new cases over the previous 7 days. The lower the better. Under 1 is good.

Pseudo recovered: The number of people who were infected 30 or more days ago who haven't died.

Pending recovered: the number of people infected in the last 29 days who haven't died. (total cases – deaths – pseudo recovered)

**Spot positive – Percent of recent test being positive. Average for the last 5 days.

My typical disclaimers and sources

I do not answer questions about location of the positives (except LTC). I do not have that information (except LTC). For the reasons why please see my post on March 31 <http://mayorkramer.com/files/mar31.html#4>

Please see the Somerset Co. status map.

<https://www.co.somerset.nj.us/government/public-health-safety/health-department/services/disease-prevention/covid-19-status-map>

We have gotten more specificity on why the Twp.'s count of the number of total cases for Franklin differs from the county cases on their map. If an infected person who lives in Franklin moves to a care facility out of Franklin, then the county does not include them in the total number. We do. If someone who lives in another town becomes infected and then comes to Franklin, we do not count them. The county does.

The State dashboard can be found

at https://www.nj.gov/health/cd/topics/covid2019_dashboard.shtml

Test numbers: <https://covidtracking.com/data/state/new-jersey>