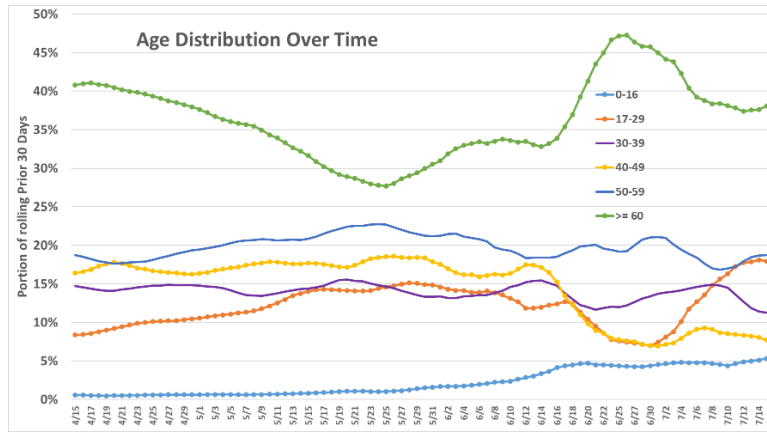
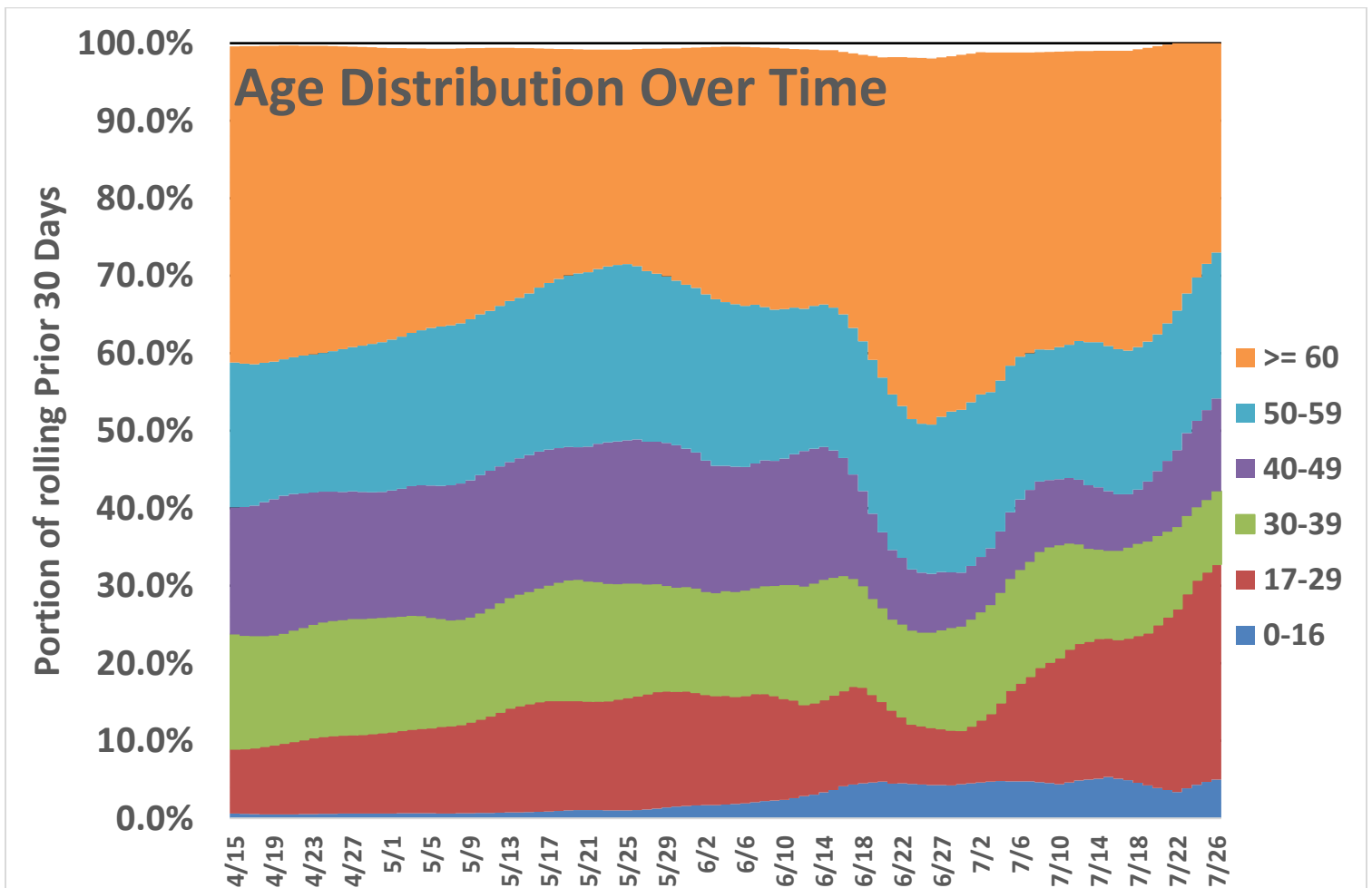


Distribution of Ages of People with Positive Test Results Over Time

A week ago I posted the [age distribution of Franklin Covid cases over time](#). It got the message across, but it was a bunch of spaghetti graphs and reading it wasn't intuitive.



Since then the ages are getting younger. So, I thought I'd do it again and I think this way is more intuitive.



Here you can readily see the 60 and over group is shrinking. Maybe due to better control at nursing homes. Those in their 50s are staying pretty constant. 40s are down over all but up in the last week. 30s are actually down but the big jump is the 17-29 year olds. Also concerning, with school opening up, is the small but significant rise in 0-16 year olds.

What can we do about it. Masks, Masks, Masks and [Testing](#).